

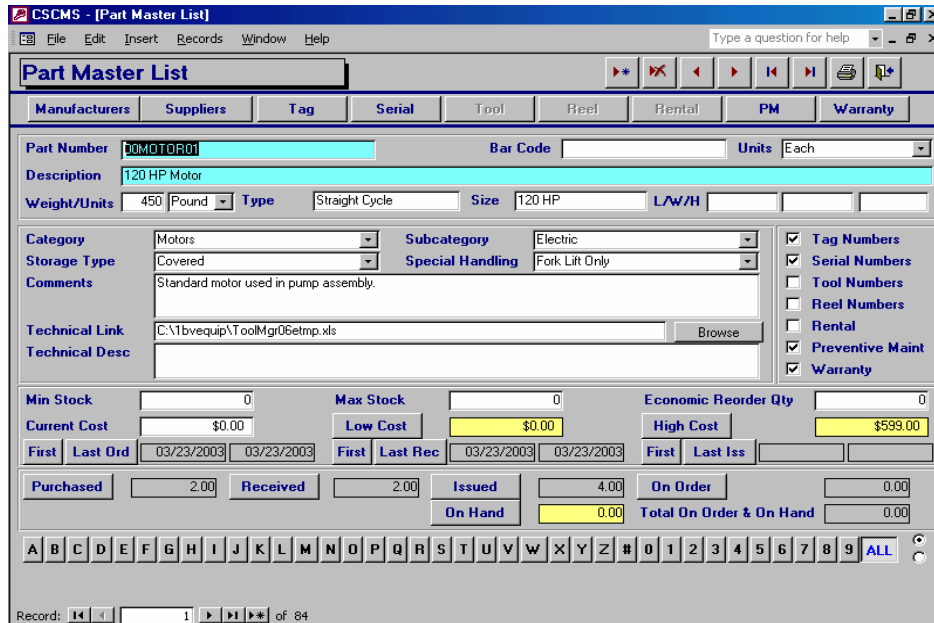


# Construction Supply Chain Management System™ (CSCMS)

CSCMS is a fully integrated materials management system designed specifically for the construction industry. The system is written in Microsoft Access XP™, with a SQL™ backend available.

*Development and Integration of Custom Modules  
Data Conversion Services Available  
Web Enabled using CAM Console™ Technology provided by LoadSpring  
Link to Tool Hound™ and BNA Fixed Assets™  
Automated Data Collection using Scanners, PDAs and Pocket PCs*

The system can operate on a stand alone pc, a local area or a wide area network. The security module allows the system users to have read/write or read only privileges. Complete on-line documentation is included.



## STANDARD MODULES

Parts Master List  
Purchase Orders  
Material Receipts  
Material Issues  
EXCEL Imports/Exports  
Serial/Tag/Rental IDs  
Inventory  
Material Lists

## OPTIONAL MODULES

User Defined Reports  
PDF Documents  
Archive/Restore  
Preventive Maintenance  
Rental Management  
Warranty Tracking  
Conversation Logs  
+ More

**DeRubertis Software Systems, Inc.**  
800-411-7213 • 407-909-0887 • [www.dssaccess.com](http://www.dssaccess.com)